

新宿

思い出横丁

西口

Shinjuku nishiguchi

OMOIDE YOKOCHO

Multi-lingual support

[English]

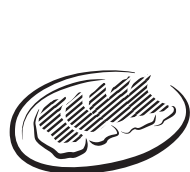
#01

Some 60 restaurants, many of them roast offal restaurants or yakitori restaurants, stand shoulder to shoulder in Omoide Yokochō, and the best way to have a good time is to visit two or three of them in succession. As you enjoy the delicious food and a tippie in the deeply nostalgic atmosphere, regulars and first-timers find themselves sitting next to each other and before they know it there is a harmonious, friendly atmosphere... That's the good old Japanese Yokochō culture.



1 | Fast food
Matsuya Shinjuku ogado Restaurant
松屋 新宿ガード店
ⓐ4:00am~1:59am | Non | ☎03-5909-3920

A simple diner serving familiar dishes such as beef and rice, curry and set meals. We revamp our menu on a regular basis and from time to time offer great-value deals.



2 | Diner
Gyoza no Antei Shinjuku Omoide Yokochō Restaurant
餃子の安てい 新宿思い出横丁店
ⓐ3:00pm~11:30pm | Sat., Sun., national holidays12:00pm~11:30pm | Non | ☎03-5323-8228

A long-established gyoza restaurant, founded in 1963. We have confidence in our nostalgic, traditional flavors! Watch sporting programs on the in-house TV as you enjoy your meal.



3 | Izakaya
Shinjuku Omoide Yokochō Bar Ennasubi
新宿思い出横町 えんなすび
ⓐ3:00pm~11:30pm | Non | ☎03-6729-0402

Our oden stew is well-known, of course; we also offer the very popular Modori chicken liver skewers from chickens raised locally in Yamanashi Prefecture, and a variety of seasonal dishes and fresh fish. Choose from over 200 different types of drink.



4 | Izakaya
Edo Komachi Shinjuku Nishiguchi Bar, Izakaya bar with private rooms only
完全個室居酒屋 江戸小町 新宿西口店
ⓐ12:00pm~12:00am | Non | ☎03-5909-8895
The only bar in Yokochō with private rooms. Known as a specialty gourmet eat-in, some rooms look out over the night view of the Shinjuku area; perfect for entertaining, a date, or for a meal on that special day.



5 | Izakaya
Charcoal-broiled skewers Kappetei
炭火串焼 かっぺ亭
ⓐ4:00pm~4:00am | Non | ☎03-3345-0188
A variety of yakitori skewers using locally-raised chickens fresh from Ibaraki Prefecture, cooked over high-grade oak charcoal. During 4pm to 7pm weekdays, 3pm to 7pm Sundays and public/national holidays, enjoy your first glass of cocktail sour for only ¥115.



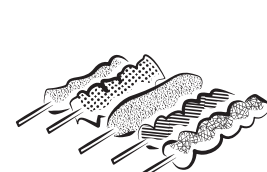
6 | Izakaya
Gifuya
岐阜屋
ⓐ9:00am~1:00am, Thu., Fri., Sat.9:00am~2:00am | Non | ☎03-3342-8658

Fill up at this Chinese diner and bar! We serve our drinks on a charcoal brazier! seasoned with miso, soy sauce, salt or hot spice.



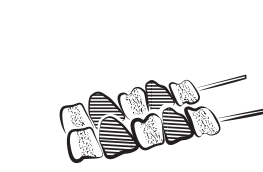
7 | Izakaya
Shinjuku Omoide Yokochō Bar Jonetsu Horumon
新宿思い出横丁 酒場 情熱ホルモン
ⓐ11:30am~12:00am | Non | ☎03-5909-8629

Enjoy a wide variety of fresh offal meats served on a charcoal brazier! We particularly recommend our Black Horumon. Rare cuts are also available.



8 | Izakaya
Banshakuya
ばんしゃく家
ⓐ3:00pm~11:30pm, Sat., Sun., national holidays12:00pm~11:30pm | Non | ☎03-3345-8399

Quality stuff at low prices. Special offers on drinks year-round. *For details search for "Banshakuya" on Google! (Proprietor)



9 | Izakaya
Yoronotaki Shinjuku West Exit Restaurant
養老乃達 新宿西口店
ⓐ10:00am~12:00am | Non | ☎03-3346-0488

Fresh fish sourced daily from local fish vendors, offered at a reasonable price. The cheerful customer service of our high-spirited staff and our lively atmosphere are the key to our popularity.



10 | Izakaya
Yasube'e
安兵衛
ⓐ4:00pm~12:00am | Mon. | ☎03-3342-2661

"Yokochō" s only large restaurant under private ownership, founded in 1940. Enjoy a meal prepared using fresh ingredients brought in daily from Toyosu Wholesale Fish Market, as well as local sake rice wine from all over Japan.



11 | Izakaya
Shinjuku Omoide Yokochō Gyutan Iroha
新宿思い出横丁 キタンいろは
ⓐ12:00pm~11:30pm, Sun., national holidays12:00pm~11:00pm | Non | ☎03-5381-2292

A public bar offering a rich selection of beef tongue dishes, including skewers, broiled tongue and deep-fried tongue. Our famous broiled tongue is tender enough to be cut with chopsticks. Our tongue stew is also excellent.



12 | Motsuyaki
Motsuyaki Kikuya
もつ焼 きくや
ⓐ9:00pm~11:30pm | Irregular | ☎03-3342-5928

Founded in 1957, Our specialties are skewers, to be enjoyed with extra sauce or with our specially-prepared salt, and our original shochu highball cocktails. A variety of shochu brands is also available.



13 | Izakaya
Torien
鳥隠
ⓐ11:30am~11:30pm | Non | ☎03-3342-2011

Our menu offers 120 items made using fresh fish sent directly from the production area and served with fresh vegetables. In addition to classic snacks to nibble as you drink, savor the flavors of the four seasons. Parties also catered for.



14 | Izakaya
Shimonya Omoide Yokochō Restaurant
西文屋 思い出横丁店
ⓐ12:00pm~11:00pm (L.O.10:00pm) | Non | ☎03-6279-0336

Satisfy your hunger with various cuts of beef, pork of chicken cooked our own special way; try yakitori, pork offal skewers broiled over charcoal, or gyuhorumoniyaki, slow-cooked beef offal.



15 | Yakitori · Motsuyaki
Daini Horaiya
第二宝来家
ⓐ3:30pm~12:00am, Sat.2:30pm~11:00pm, Sun., national holidays12:00pm~10:00pm | Irregular (Check the website) | ☎03-3344-3117

The first broiled offal restaurant in Yokochō. We are proud of our wide variety of skewers, broiled over high-grade oak charcoal and served with our special sauce made from a secret recipe developed over many years, as well as our fresh, top-grade offal sashimi!



16 | Izakaya
Stand Bar Banpaiya Shinjuku Omoide Yokochō Bar
立呑み晩杯屋 新宿思い出横丁店
ⓐ7:00am~11:30pm | Non | ☎03-5989-0360

Fresh fish sourced directly from Toyosu Wholesale Fish Market and prepared daily, to offer a variety of menu items speedily and a reasonable cost. "We aim to be the best first-stop bar." (Bar manager)



17 | Diner
Beef-Bar Kikuya
牛肉・酒場 キクヤ
ⓐ6:00pm~12:00am (L.O.11:30pm) | Mon. | ☎03-3342-1634

In an atmosphere somewhat different from that of our parent restaurant Motsuyaki Kikuya, we serve delicious meals, mainly dishes featuring beef. Our drinks menu is also rich and varied.



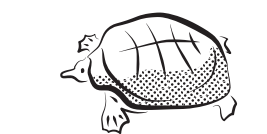
18 | Coffee shop
Tajimaya Coffee House
但馬屋珈琲店
ⓐ10:00am~12:00pm (L.O.10:30pm) | Non | ☎03-3342-0881

The exceptionally fine taste of deep-roasted coffee brewed through a cloth filter, using beans roasted in-house. Take your time and relax in the nostalgic atmosphere reminiscent of the Taishō Era (early 20th century).



19 | Izakaya
Good food from the North-Dosanko
北のうまい飯 道産子
ⓐ4:00pm~12:00am | Sun. | ☎03-3342-2958

A restaurant where you can enjoy unusual and delicious seafood brought directly from Hokkaido. For sake, we recommend our Kita no Homare; for shochu, be sure to try our original 20-year-old Konbu Shochu.



20 | Izakaya
Asadachi
朝起
ⓐ1:00pm~12:00am (L.O.11:30pm) | Alternate Mon. | ☎03-3342-1083

We offer a different selection of fish and shellfish day to day; in addition, we also offer delicacies such as frog, loach and snapping turtle (reservation required) as well as vegetable and meat dishes.



21 | Yakitori · Motsuyaki
Fujinoya
藤の家
Currently closed



22 | Bar
ALBATROSS
ALBATROSS
ⓐ5:00pm~2:00am | Non | ☎03-3342-5758

A candle-lit bar with a tranquil atmosphere. Table charge ¥300, drinks from ¥500. Upstairs we operate an art gallery.



23 | Eels
Eels Kabuto
鱈 カブト
ⓐ1:00pm~8:00pm | Sun., national holidays | ☎03-3342-7671

Established in 1947, and serving nothing but eels! We serve every part of the eel, from the head to the fins, the liver and the tail, skewered and broiled over high-grade oak charcoal.



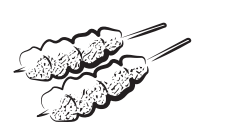
24 | Izakaya
Yasube'e Annex
安兵衛 附席
ⓐ4:00pm~12:00am | Mon. | ☎03-3347-0545

Remodeled into Omoide Yokochō's 6 first cup-sake bar serving local sake from all over Japan. A wide variety of other drinks are also available. Enjoy a gourmet treat or a snack with your tippie.



25 | Motsuyaki
Motsuyaki Utchan
もつ焼 ウツちゃん
ⓐ4:00pm~10:00pm (L.O.) | Non | ☎03-5909-5890

A varied menu of dishes, including skewers of course, that goes well with drinks. Especially popular are our broiled offal and offal stew, made using fresh offal.



26 | Izakaya
Morimasu
もります
ⓐ5:00pm~11:00pm | Sun., Mon. | ☎03-3342-7848

Popular cuisine, including fresh seafood and a daily menu that changes with the season, with a wide variety of dishes of every kind. "We're keeping going even in the Corona crisis." (Proprietor)



27 | Diner
Tsurukame Diner
つるかめ食堂
ⓐ4:00pm~11:30pm | Irregular | ☎03-3343-4078

A popular eating spot in Yokochō. Our specialties are our soy-don, curry-flavored soy rice bowl with soy beans and mincemeat, and genki-don, rice bowl with a superb combination of beef tendon and marinated ham.



28 | Oysters
Oyster Bar Tsukiji Sandai
オイスターバー 築地三代
ⓐ4:00pm~11:30pm (L.O.10:00pm) | Mon. | ☎03-3343-2023

An oyster bar run by middle traders from the Toyosu Wholesale Fish Market. Enjoy year-round the taste of fresh oysters selected daily at the auction by our experts. Our customers also enjoy comparing the taste of oysters from different production areas.



29 | Yakitori · Kushiyaki
Hinadori Main Restaurant
ひなどり本店
ⓐ5:00pm~12:00am | Non | ☎03-3340-8088

Our hot pot, served with pride in an atmosphere reminiscent of the Showa Era (20th century), is a must. We also offer a variety of yakitori, including of course tender shoulder meat and chicken liver, as well as an extensive à la carte menu.



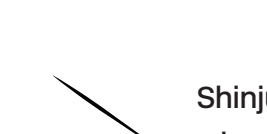
30 | Yakitori · Kushiyaki
Shinobue
志の笛
ⓐ5:00pm~11:00pm | Mon., Tue. | ☎03-3342-4066

*Thanks to the loyal support of our customers, we have been doing business in Yokochō for nearly 70 years now." (Proprietor) Our special offal stew, which dates back to our earliest days, is well received.



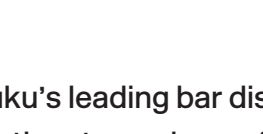
31 | Yakitori · Kushiyaki
Hinadori No. 4 Restaurant
ひなどり 4号店
ⓐ5:00pm~12:00am | Non | ☎03-3342-4072

Of all the many kinds of yakitori we offer, including tender shoulder meat, we particularly recommend the liver. Enjoy the luxurious taste of fresh meat bought in daily and lightly broiled.



32 | Sushi
Sushi Tatsu
寿司 辰
ⓐ5:00pm~11:45pm | Sun., national holidays | ☎03-3342-0740 (Reservation recommended)

The only sushi restaurant in Yokochō. We take our sushi seriously, using only the finest toppings and rice, and also making our own thick omelettes. Our upstairs room is available for private parties of up to eight guests!



33 | Izakaya
Rakugaki
らくがき
ⓐ5:00pm~12:00am | Sun., When Monday is a public holiday | ☎03-3343-4054

Be sure to try our garlic miso, added to and maintained from the time of our grandparents, served together with pig's trotters or skewers. Our fresh seasonal vegetables are also popular.



34 | Yakitori · Kushiyaki
Torie
鳥会
ⓐ6:00pm~12:00am | Irregular | ☎03-3342-6612

The freshness goes without saying; the quality of our yakitori chicken skewers, with particular care taken to ensure that the charcoal, the salt and the degree of cooking are just right, far outstrips the price. "Come and make good memories." (Proprietor)



35 | Bubble tea
Mincha Bubble Tea Shop
茗茶タピオカ専門店
Currently closed



36 | Yakitori · Kushiyaki
Hinadori No. 2 Restaurant
ひなどり 2号店
ⓐ9:00am~1:00am | Non | ☎03-3348-0223

In addition to the classic snacks you would expect to find in Omoide Yokochō - yakitori, roasted vegetables, hot pot - be sure to enjoy the seasonal vegetable meat roll-ups served by our renowned lady manager.

[Data Description]

- The numbers (or alphabet) indicate the position on the map.
- Next to the number (or alphabet), the genre of the store is listed.
- Icon Description
 - ⓐ=Hours of business | Regular closing day (s)
 - ☎=Telephone number
 - ※L.O.=Last orders

[Please Note]

All information is correct as of April 16, 2021. Opening hours and/or menu offered may change without notice. Due to the declaration of the State of Emergency, business hours may be cut short. For details please contact the shop.



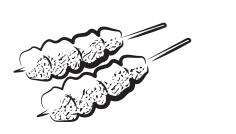
37 | Curry
Curry House Coco Ichibanya Shinjuku Station West Exit Restaurant
カレーハウス CoCo Ichibanya 新宿駅西口店
ⓐOpen 24 hours | Non | ☎03-3345-0775

Choose the type of curry, toppings, portion size and spice level to create your own personal "Cocolchi" curry. Takeaway orders also welcome.



38 | Izakaya
Echigoya
越後屋
ⓐ4:00pm~1:00am | Irregular | ☎03-3342-0661

We offer a full and varied menu, including yakitori skewers, wagyu skewers, broiled seafood and grilled fish. Wash them down with sake or shochu from the Echigo district. "Drop by on a night you want to grab a drink." (Proprietor)



39 | Yakiton
Yakiton Nogataya
やきとん 野方屋
ⓐ3:30pm~12:00am (L.O.11:30pm), Sat., Sun., national holidays3:00pm~12:00am (L.O.11:30pm) | Non | ☎03-3344-2057

Our specialty is yakitori pork skewers with miso sauce, available in no other restaurant. In addition to our wide variety of kushiyaki skewers, classic snacks such as our liver sashimi or potato salad are popular, as are our broiled pig's trotters.



40 | Yakitori · Kushiyaki
Hozuki
ほおずき
ⓐ5:00pm~11:00pm | Mon., Tue. | ☎03-3342-4066

The interior of the bar has the style of an old-fashioned sweet shop of the Showa Era. Give full play to your inner child as you enjoy a plate of sweets or oden stew.



41 | Soba
Kameya
かめや
ⓐOpen 24 hours | Sun. | ☎03-3344-3820

Freshly-made, freshly cooked soba buckwheat noodles at a reasonable price. Our Original Tendama Soba, topped with freshly-fried tempura and a soft-boiled egg (¥430) is popular.



42 | Eatery
Eatery Mayukichi
小料理屋 まゆきち
ⓐ4:00pm~11:00pm | Sun. | ☎03-3344-0661

Hospitality with dishes made using seasonal ingredients, served with drinks that go well with the food. A wide range of classical drinking nibbles are also available, including kimpagyo (buckrock rice cooked in sesame oil and soy sauce), itawasa (sliced steamed fish paste served with soy sauce and wasabi), etc.



43 | Motsuyaki
Jisaku
次作
ⓐ3:00pm~11:30pm | Irregular | ☎03-3342-7060

Our sauce yakisoba (fried noodles) have been a steady favorite for over 50 years, but we have lots of other quietly popular menu items, such as pork tongue boiled till tender, or beef steak.



44 | Oden stew
Saitamaya No.2 Restaurant
埼玉屋貳号店
ⓐ2:00pm~12:00am | Irregular | ☎03-3342-0662

The only restaurant in Yokochō specializing in oden stew. Order items singly, or go for an assortment (¥700). In addition to oden we also have grilled fish, à la carte menu and other stewed items.



45 | Izakaya
Sasamoto
さきもと
ⓐ3:30pm~11:00pm | Non | ☎03-3344-3153

Offal hot pot (with miso), offal sashimi, drinking nibbles to match the season. "Drop by any time." (Proprietor)



46 | Yakitori · Kushiyaki
Saitamaya Main Restaurant
埼玉屋本店
ⓐ2:00pm~11:30pm | Irregular | ☎03-3342-5525

Our specialty is extra-large skewers broiled over high-grade oak charcoal. Our menu is varied, including offal, meat filling, bacon wraps, etc. A party room is available upstairs.



47 | Izakaya
Hisago
ひさご
ⓐ5:00pm~11:00pm | Sun., national holidays | ☎080-3391-3759

Our motsuyaki, fresh offal broiled broiled over charcoal, is popular. Let the aroma of the charcoal tempt you; drop in this evening for a drink.



48 | Yakitori · Kushiyaki
Ichifuji
一富士
ⓐ3:00pm~11:00pm | Mon., Thu. | ☎03-3342-0389

Sixty years serving yakitori and stew! Be sure to enjoy too such gems as our diced fresh tuna or grilled tuna marinated, available only here!



49 | Yakitori · Kushiyaki
Isuzu
五十鈴
ⓐ2:00pm~11:30pm | Non | ☎03-3344-3104

We work together with our neighbor Komatsu. In addition to our charcoal-broiled skewers served with a sauce the secret recipe for which dates back over 70 years, our wide range of drink-enhancing nibbles, including our homemade pickles, is popular.



50 | Izakaya
Komatsu
小松
ⓐ2:00pm~11:30pm | Non | ☎03-5322-1179

We work together with our neighbor Isuzu. The upstairs room, accessible from the street by a staircase, is available for group parties. In addition to yakitori and broiled vegetables, dishes such as offal stew are also available.



51 | Yakitori · Motsuyaki
Daiichi Horaiya
第一宝来家
ⓐ4:30pm~1:00am | Irregular (Check the website) | ☎080-7851-9067

The first motsuyaki (broiled offal) in Yokochō, established in 1947. Fresh offal is good broiled over charcoal and served with our special sauce - we also recommend you try it as sashimi!



52 | Izakaya
Tatchan
たっちゃん
ⓐ5:00pm~12:00am | Sun. | ☎03-3348-4594

*Our plentiful menu includes such items as broiled seafood and motsuyaki (broiled offal). (Proprietor) Our specialty is our juicy Tatchan Special Tsukune Meatballs (¥600).



53 | Izakaya
Marusho
丸庄
ⓐ3:00pm~12:00am | Irregular | ☎03-3346-3359

The popular proprietress who runs this establishment is fondly known as "Gatten Obasan (Madam Got-it)". She recommends her offal stew and kawa ponzu (fried chicken skin with citrus sauce). The macaroni salad is also popular.





新宿思い出横丁

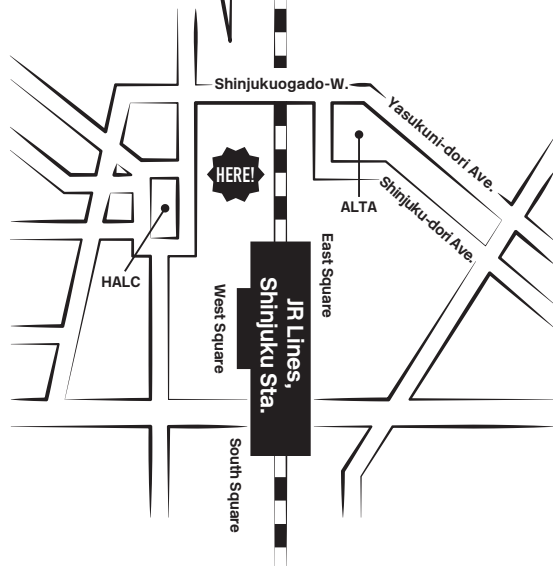
Shinjuku nishiguchi OMOIDE YOKOCHO Map

Multi-lingual support
[English] #01

※All information is correct as of April 16, 2021.
Opening hours and/or menu offered may change
without notice. For details please contact the shop.



2 minutes on foot
from Shinjuku Station
West Exit!



Shinjuku Nishiguchi
Shopping District Promotion
Association



The bars and restaurants
aren't the only thing
that keeps
Yokocho buzzing!

Some useful spots

19

大黒屋

J | Purchase and sale
of tickets, cash vouchers
Daikokuya Omoide
Yokocho Branch
大黒屋 思い出横丁店
☎10:00am-7:00pm | Non | ☎
03-5339-2600

Daikokuya has two premises in
Yokocho; we specialize in the sale and
purchase of tickets. We have a solid
record of paying high prices. For great
deals, check out the shop posters!



K | Tobacco / Cigarettes
Kaneso Tobacco Shop
カネソ たばこ店
☎12:00pm-9:00pm | Non | ☎
03-3342-2881

The only tobacco shop in Yokocho, we
stock a full selection of cigarettes,
tobacco for HNB units, cigars, tobacco
for hand-rolling, and pipe tobacco.



L | Specializing in the purchase
of alcohol of every kind
Whisky Okoku Shinjuku
Nishiguchi Branch
ウイスキー王国 新宿西口店
☎10:00am-8:00pm | Non | ☎
03-6258-0766

A shop specializing in the purchase of
alcohol of every kind, including whisky.
Our experienced appraiser will make an
assessment and offer a fair purchase
price. Feel free to inquire.



A | Purchase and sale of
branded items
Brand Jungle
Shinjuku Main Store
ブランドジャングル新宿本店
☎11:00am-8:00pm | Non | ☎
03-6258-1712

We stock a wide range of goods from
top brand, new old stock to vintage
items, all in good condition. Tax-free
shopping for overseas visitors to
Japan.



B | Purchase and sale of
branded items
Collection Shinjuku
コレクション新宿
☎11:00am-8:00pm | Non | ☎
03-5324-9177

In addition to new and used items from
popular brands, such as watches and
bags, we pay high prices for gold,
platinum and jewellery, and sell cheap!

甲南チケット

C | Purchase and sale
of tickets, cash vouchers
Konan Ticket
甲南チケット
☎10:00am-7:00pm | Non | ☎
03-6302-0886

A major ticket resale shop with 35
directly-managed branches mainly in
the Kansai area. In addition to the sale
of tickets and vouchers of every kind,
we also have a solid record in paying
high prices to purchase the same.

ロータリーギフト 西口店

M | Purchase and sale
of tickets, cash vouchers
Rotary Gifts Shinjuku
Nishiguchi Branch
ロータリーギフト 新宿西口店
☎10:00am-8:00pm, Sun., na-
tional holidays | 10:00am-7:00pm
| Non | ☎03-3345-6900

A long-established coupon and voucher
shop dealing in coupons, gift certifi-
cates and admission tickets of every
kind. In particular, we carry a wide
variety of art appreciation tickets. "By
all means, drop by!" (Proprietor)

チケットオズ

D | Purchase and sale
of tickets, cash vouchers
Ticket Oz
チケット オズ
☎10:00am-7:00pm | Non | ☎
03-6279-4222

A shop that handles the sale and
purchase of transportation tickets and
cash vouchers of every kind, in partic-
ular stockholder benefit coupons. Feel
free to inquire regarding prospective
transactions.



N | Foreign currency exchange
Shinjuku Exchange
新宿取引所
☎10:30am-6:30pm | Non | ☎
03-3344-1122

We are a shop that deals in foreign
currency exchange and the purchase
and sale of Amazon gift cards and
other electronic gift certificates. We
currently handle 53 foreign currencies.

アクセスチケット

E | Purchase and sale
of tickets, cash vouchers
Access Tickets
Omoide Yokocho Branch
金券ショップ アクセスチケット思い出横丁店
☎11:00am-7:00pm | Non | ☎
03-3344-2070

Lots of tickets, coupons of every kind, cash
vouchers, stockholder benefit coupons, for
bargains in your daily life. We have
confidence in our ability to sell at a low price
of course, but also to buy at a high price.

ロータリーギフト 新宿西口2号店

O | Purchase and sale
of tickets, cash vouchers
Rotary Gift Shinjuku
Nishiguchi No. 2 Shop
ロータリーギフト 新宿西口2号店
☎9:00am-7:00pm, Sat., Sun., na-
tional holidays | 10:00am-7:00pm
| Non | ☎03-3349-6883

Although we are a long-established
coupon and voucher shop dealing in
tickets of every kind, our best-selling
item on rainy days is - umbrellas! When
you are caught in a sudden shower, this
is the place to come.



F | iPhone repairs
iPhone Repair
Emergency Service
Shinjukuogado Branch
iPhone 修理救急便 新宿大ガード店
☎10:00am-8:00pm | Non | ☎01
20-905-019

We repair iPhones using high-quality
parts and reliable skills. We carry out a
daily price survey to provide the lowest
prices in the local area (inclusive of
working costs).

アクセスチケット

P | Purchase and sale
of tickets, cash vouchers
Cash Voucher Shop
Access Tickets
Omoide Yokocho Branch
金券ショップ アクセスチケット新宿西口店
☎10:00am-8:00pm | Non | ☎
03-3342-5449

We have lots of tickets and vouchers
for bargains in your daily life, including
tickets, cash vouchers of every kind,
and stockholder benefit coupons. If you
have cash vouchers of any kind to sell,
you can trust us to offer a good price.

チケットのさくらや

G | Purchase and sale
of tickets, cash vouchers
Sakuraya Tickets Shinjuku
Nishiguchi Branch
チケットのさくらや 新宿西口店
☎9:30am-7:00pm | Sun., Tue. | ☎
03-3343-5887

We may be small, but we have a full
line-up of items available. "We also
purchase tickets. Please feel free to
inquire." (Proprietor)



Q | Menswear
MINAMI
MINAMI
☎10:00am-8:00pm | Tue. | ☎
03-3342-0016

We carry a wide variety of items, from
business suits to formal suits and
three-piece suits. We specialize in
men's suits, offering garments of value
at a low price.

Foreign currency exchange

H | Foreign currency
exchange Interbank
外貨両替 インターバンク
☎11:00am-7:00pm, Sat., Sun., na-
tional holidays | 12:00pm-7:00pm
| Non | ☎03-5201-3970

"A cost-effective foreign currency
exchange shop. Our rates can be
checked on our website. We also
handle postal transactions." (Proprietor)

ちけっとパーク

R | Purchase and sale
of tickets, cash vouchers
Ticket Park
ちけっとパーク
☎10:00am-7:50pm, Sun., na-
tional holidays | 10:00am-7:20pm
| Non | ☎03-6302-0844

A cash voucher shop with a cheery
atmosphere; our motto is "Affinity with
the customer". We welcome large
quantities and price negotiation. We
can also offer foreign currency
exchange with no handling charges.

Daikokuya Pawnbrokers

I | Purchase and sale of branded
items - Collateral loans
Daikokuya Pawnbrokers
Shinjuku Nishiguchi Branch
大黒屋 質 新宿西口店
☎11:00am-8:00pm, Sun., na-
tional holidays | 10:30am-7:30pm
| Non | ☎03-5339-2660

In addition to new and used branded
items, we buy/accept as loan collateral
wrist watches, precious metals, electri-
cal items, smartphones etc. "Be sure to
use our services!" (Proprietor)

金券ショップ ビックチケット

S | Purchase and sale
of tickets, cash vouchers
Bic Ticket
ビックチケット
☎9:00am-8:00pm, Sat. 10:00am-
8:00pm, Sun., national holidays | 10:00
am-7:30pm | Non | ☎03-3345-6590

We offer a full line-up of vouchers of
every kind, including discount airline
tickets, express bus tickets, Quo
cards, etc. Drop by every day to
discover bargains!

Yanagi-dori (Senro-dori) alley

Naka-dori alley

Omote-dori St.

SHINJUKU
PaLeTTe